

Board Report #2

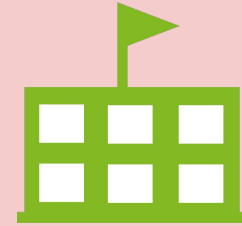
School Reopening

June 23, 2020

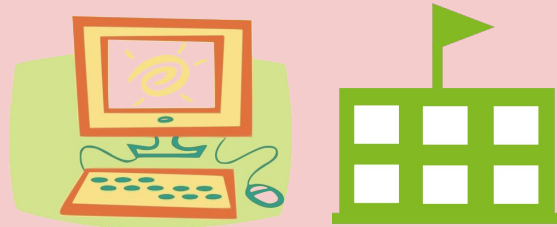
Readiness Scenarios



100% Remote



Full Face- to-Face



Hybrid Model

Santa Barbara County Public Health Guidelines

COVID-19 Industry Interim Guidelines for Schools and School Based Programs

- ❖ General Measures
- ❖ Promote Healthy Hygiene Practices
- ❖ Intensify Cleaning, Disinfections, and Ventilation
- ❖ Implementing Distancing Inside and Outside of the Classroom
- ❖ Limit Sharing
- ❖ Train All Staff and Educate Families
- ❖ Check for Signs and Symptoms
- ❖ Plan for When a Staff Member, Child, or Visitor Becomes Sick
- ❖ Maintain Healthy Operations
- ❖ Considerations For Partial or Total Closures

DRIVERS FOR SCHOOL REOPENING

Identifying priorities for fall 2020



Instruction

Models that support student and adult learning while maximizing engagement. Includes use of technology, including devices, to facilitate learning.

Community & Family Engagement



Active engagement of families and community partners to support learning.

Health & Wellness



Social emotional learning and supports for students and staff. Focus on health and hygiene.

Governance & Leadership



Coordination of services and policies with a lens toward equity and access.

Facilities & Operations



General guidelines for school and district operations, including transportation, cleaning and safety protocols.

Governance and Leadership

- Reopening design teams will continue to meet and plan as we finalize scenarios
- Teams are prepared to adapt plan as needed to address changing guidance from health professionals
- Communication between district leadership and stakeholders will continue via regular weekly updates and reports
- Continue and strengthen communication protocols with local and State authorities
- Once students are back on campus, enforce guidelines and policy around district response to a positive COVID-19 test of a student, teacher, staff member or exposure incident.

Instruction--Process

- “Reopening of School” design team composed of Cabinet members, the SBTA negotiating team, and rotating principal representatives met four times
- Elementary and secondary specific reopening workgroups met six times each
These groups were composed of cabinet members, administrators, and teacher representatives.
- The work of all design groups was informed by direction from the school board, regular updates from the Santa Barbara County Health Department, emails from stakeholders, and three formal surveys; Districtwide Parent Survey, Certificated Staff Survey #1 and #2, Secondary Student Survey

Instruction--Models

Overarching design:

- Staff propose conceptual models that will need further development and will allow for adjustments that may need to be made in response to changing conditions.
- By dividing students into two cohorts, we will maximize the time students can physically be on school campuses while adhering to health and safety guidelines.
- Blended learning models provide opportunities for a combination of:
 - In-person and remote learning
 - Synchronous (real-time) and asynchronous learning
 - Effective utilization of technology
- Option for all-remote learning is still in the exploration phase.
- Special Education leaders are developing models to accommodate the needs of students in special program.

Monday	Tuesday	Wednesday	Thursday	Friday
Cohort A On campus	Cohort B On campus	Blended Learning Support	Cohort A On campus	Cohort B On campus
Staggered Start Times Temperature Checks Grab and Go Breakfast or in class Breakfast	Staggered Start Times Temperature Checks Grab and Go Breakfast or in class Breakfast	Blended learning support: <ul style="list-style-type: none"> ● Zoom w/students ● Individual/small group student support ● Intervention ● Planning ● Professional Learning PLC time Staff meetings 1x/month	Staggered Start Times Temperature Checks Grab and Go Breakfast or in class Breakfast	Staggered Start Times Temperature Checks Grab and Go Breakfast or in class Breakfast
In Class Instruction	In Class Instruction		In Class Instruction	In Class Instruction
Brain Break and Structured Movement	Brain Break and Structured Movement		Brain Break and Structured Movement	Brain Break and Structured Movement
In Class Instruction	In Class Instruction		In Class Instruction	In Class Instruction
Grab and Go Lunch/ supervised break	Grab and Go Lunch/ supervised break		Grab and Go Lunch/ supervised break	Grab and Go Lunch/ supervised break
In Class Instruction	In Class Instruction		In Class Instruction	In Class Instruction
Stagger Dismissals Social Distancing Bussing After School Partners	Stagger Dismissals Social Distancing Bussing After School Partners		Stagger Dismissals Social Distancing Bussing After School Partners	Stagger Dismissals Social Distancing Bussing After School Partners
Cleaning/sanitation	Cleaning/sanitation		Cleaning/sanitation	Cleaning/sanitation

Model for Junior High Schools

August 18 to October 16 (periods 1, 2, 3) / October 20 to January 15 (periods 4,5, 6)

Monday	Tuesday	Wednesday	Thursday	Friday
Cohort A On campus	Cohort B On campus	Blended Learning Support	Cohort A On campus	Cohort B On campus
Period 0 *Note period 0 and 7 run both quarters	Period 0	PLC collaboration time Staff meetings 1x/month	Period 7	Period 7
Period 1/4	Period 1/4	Blended learning support: <ul style="list-style-type: none"> • Optional Zoom w/students • Individual/small group student support • Grading • Planning • Professional Learning 	Period 1/4	Period 1/4
Passing/cleaning	Passing/cleaning		Period 2/5	Period 2/5
Period 2/5	Period 2/5		Lunch	Lunch
Lunch	Lunch		Period 3/6	Period 3/6
Period 3/6	Period 3/6		Passing/cleaning	Passing/cleaning
Passing/cleaning	Passing/cleaning		Period 8 Flex (Optional)	Period 8 Flex (Optional)
Period 8 Flex (Optional)	Period 8 Flex (Optional)			

Model for High Schools*

Monday Cohort A On campus	Tuesday Cohort B On Campus	Wednesday All students at home	Thursday Cohort A On campus	Friday Cohort B On campus
<i>Period 0 (limited course offerings at DP & SB)</i>	<i>Period 0</i>	PLC time Staff meetings 1x/month	<i>Period 0</i>	<i>Period 0</i>
Period 1	Period 1	Blended learning support: <ul style="list-style-type: none"> • Optional Zoom w/students • Individual/small group student support • Grading • Planning • Professional Learning • Professional Collaboration 	Period 1	Period 1
Passing/cleaning	Passing/cleaning		Passing/cleaning	Passing/cleaning
Period 2	Period 2		Period 2	Period 2
Lunch	Lunch		Lunch	Lunch
Period 3	Period 3		Period 3	Period 3
Passing/cleaning	Passing/cleaning		Passing/cleaning	Passing/cleaning
Period 4	Period 4		Period 4	Period 4

*La Cuesta and Alta Vista High Schools will develop models in accordance with the unique needs of those programs.

Instruction--Teaching & Learning

Continuing commitment to developing Global Learners who demonstrate:

- High-Level Academic Preparation and Multilingualism
- College and Career Readiness
- Mastery of 21st Century Literacies (Environmental, Visual, Digital, Media, and Informational)
- Innovation, Creativity, Critical Thinking, Communication, Collaboration, Solution-Seeking Competencies
- Physical and Mental Wellness
- Sociocultural Capacities including identity development, cross-cultural competence, and multicultural appreciation

Professional learning that is personalized and responsive to new needs.

Facilities and Operations-- Business Services

Sanitation:

- Masks for staff and students
- Sanitizers in each classroom and offices
- Thermometers
- Plexiglass partitions for office area

Transportation: working with STA and MTD to ensure student's safety

Food Service: Goal is to feed as many students as possible and as safely as possible

Facilities and Operations-- Human Resources

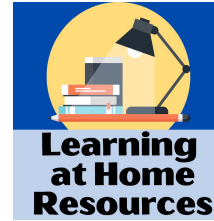
- Employee Health & Safety
- Employee Working Conditions
- Employee Absences

Community and Family Engagement

Public Information Officer Camie Barnwell and María Larios Horton, Director of Parent and Family Engagement, will work in partnership to provide information, updates and resources.

We will continue to communicate with and solicit input from our students, families and community stakeholders:

- Communication channels
- Engagement and feedback channels



Health and Wellness

- Promotion of healthy hygiene practices
- Creation of guidelines for limiting sharing of equipment and belongings.
- Plan logistics to address school arrival and departure.
- Create guidelines for guarantee of physical distancing in classrooms.
- Create policies related to the use and navigation of non-classroom spaces.
- Design of systems for monitoring students and staff for symptoms of COVID-19
- Develop plans for responding to sick staff members and students.
- Monitor state and local health orders and adjust district operations accordingly.
- Respond to mental and emotional health of students and staff

Recommendation

It is recommended that, in the event that the District is required to open school in a hybrid scenario, the school board:

1. Approve the implementation of an A/B Cohort Model for its students in grades TK-6.
2. Approve the implementation of a Quarter-Block model in junior high schools.
3. Approve the implementation of an Semester Block model at Dos Pueblos and Santa Barbara High Schools.
4. Approve the implementation of a 100% remote model for students grades TK-12.